

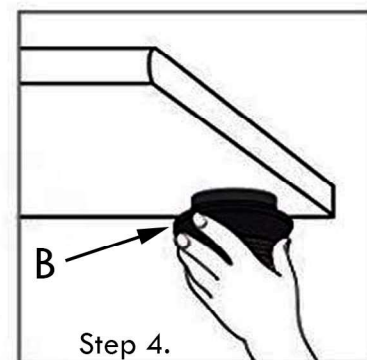
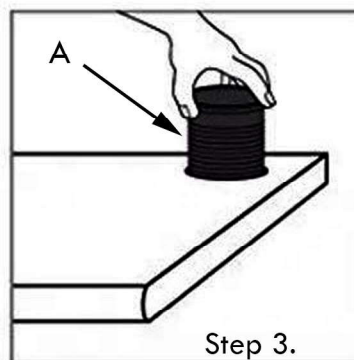
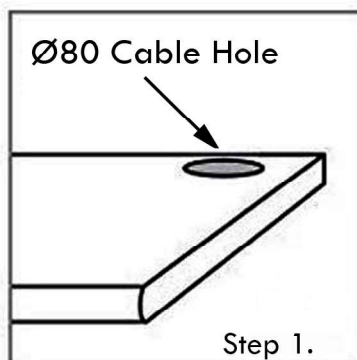
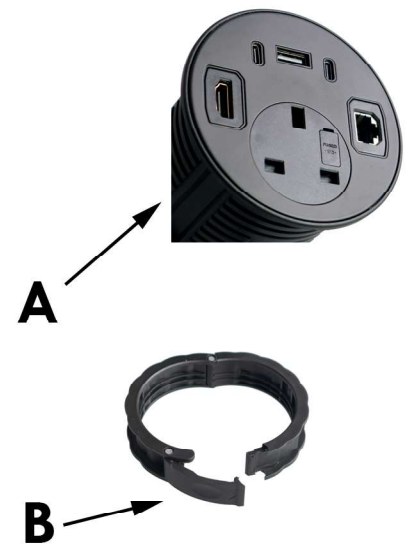
CHARGEBASE Grommet Power Installation Guide

Warning

1. The grommet power is designed for light-duty office use (max. 5A or 1.1KW), do NOT use for any other purposes.
2. All electrical cables should be fitted by a qualified electrician.
3. Do not attach power and/or data cables before fitting.
4. Disconnect from mains power before remove/replace optional modules.
5. Do not dismantle or remodel the power module.

Installation

1. Make sure the desk top has a pre-cut $\text{Ø}80$ mm cable hole, otherwise use a hole saw to cut one first.
2. Remove part B from the main body A.
3. Place part A through the cable hole.
4. Tighten the fixing ring B to secure.



Certifications

CE, BS5733

emantis, Unit 2 Network Park, Duddleston Mill Road
Birmingham B8 1AU, United Kingdom
Email: support@emantis.uk Web: www.emantis.uk

